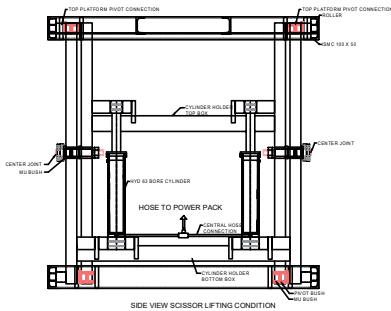


MOC : M.S.
 SURFACE FINISH : PU ENAMEL SPRAY PAINTED
 COLOUR : GOLDEN YELLOW
 INCHING MODE LIFTING OPERATION.

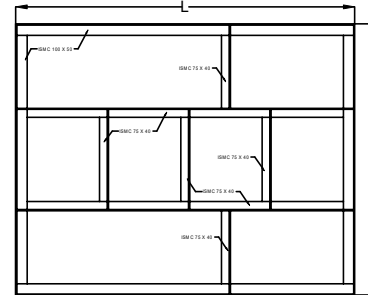
LOCATION: Indoor / Outdoor

CAPACITY	C	1000 kg
PLATFORM LENGTH	L	1500 mm
PLATFORM WIDTH	W	1200 mm
MOTOR HP	M	3 HP
MIN HEIGHT	H1	400 mm
MAXIMUM HEIGHT	H2	1200 mm
LIFT HEIGHT	H	800 mm
DISTANCE BETWEEN BOTH SCISSOR TABLES	D	2228 mm

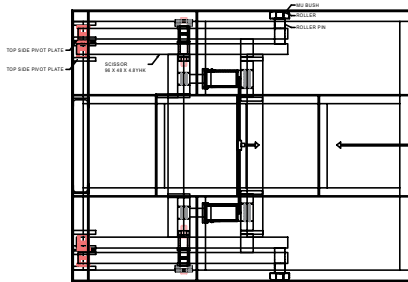
NOTE
 1- HYDRAULIC HOSE LENGTH FROM CYLINDER TO POWERPACK WILL BE 5 M
 2- LIFTING SPEED : APPROX. 3M/MIN.
 3- LOWERING SPEED - ADJUSTABLE



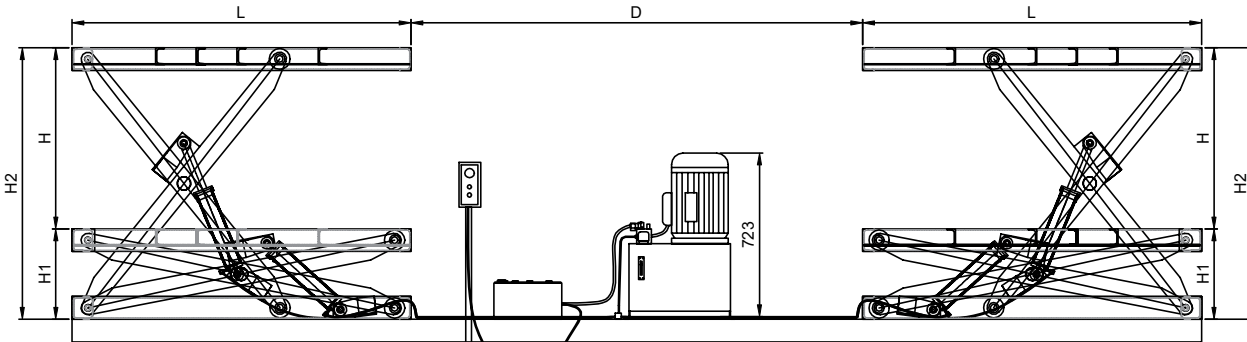
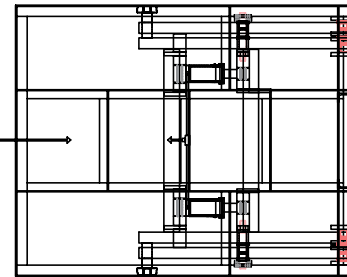
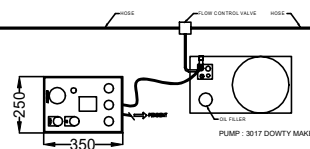
SIDE VIEW SCISSOR LIFTING CONDITION



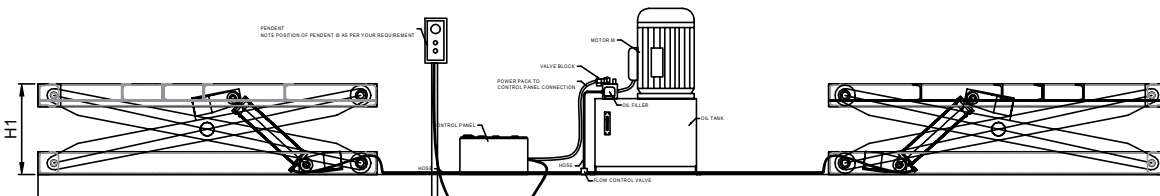
TOP FRAME SCARTING DRAWING



TOP VIEW OF SCISSOR LIFT



FRONT VIEW SCISSOR LIFTING CONDITION



ALL DIMENSIONS ARE IN MM

CUSTOMER:- M/S TVS MOTORS HOSUR.			
PRODUCT:- ELE HYD SCISSOR LIFT (STATIONARY)			
PROJECT:-		CAPACITY : 1000 KGS.	
COMP.FILE NO : GA DRAWING			
PROJECTION:-	SCALE:- NTS	DATE	SIGN
	DRAWN	23.02.2020	PRATIK JOSHI
	CHECKED	23.02.2020	PRATIK JOSHI
	APPROVED	23.02.2020	PRATIK JOSHI
			REV 01

JOIST-O-MECH
 (SINCE 1987)

THIS PRINT IS THE PROPERTY OF
 M/S JOIST-O- MECH
 RETURNED UPON REQUEST THIS PART
 NOT BE SOLD TO ANY OTHER CONCERN.

SIZE
 A4
 SHEET
 1 OF 1